

Asprova MS Light

Manufacturing Scheduler

Includes the essential features of Asprova scheduler!

Asprova MS Light represents the voices of over 2900 Asprova users. It contains all the indispensable basic features to shorten lead times and reduce the inventories of small manufacturing plants.

Are you troubled by these problems?



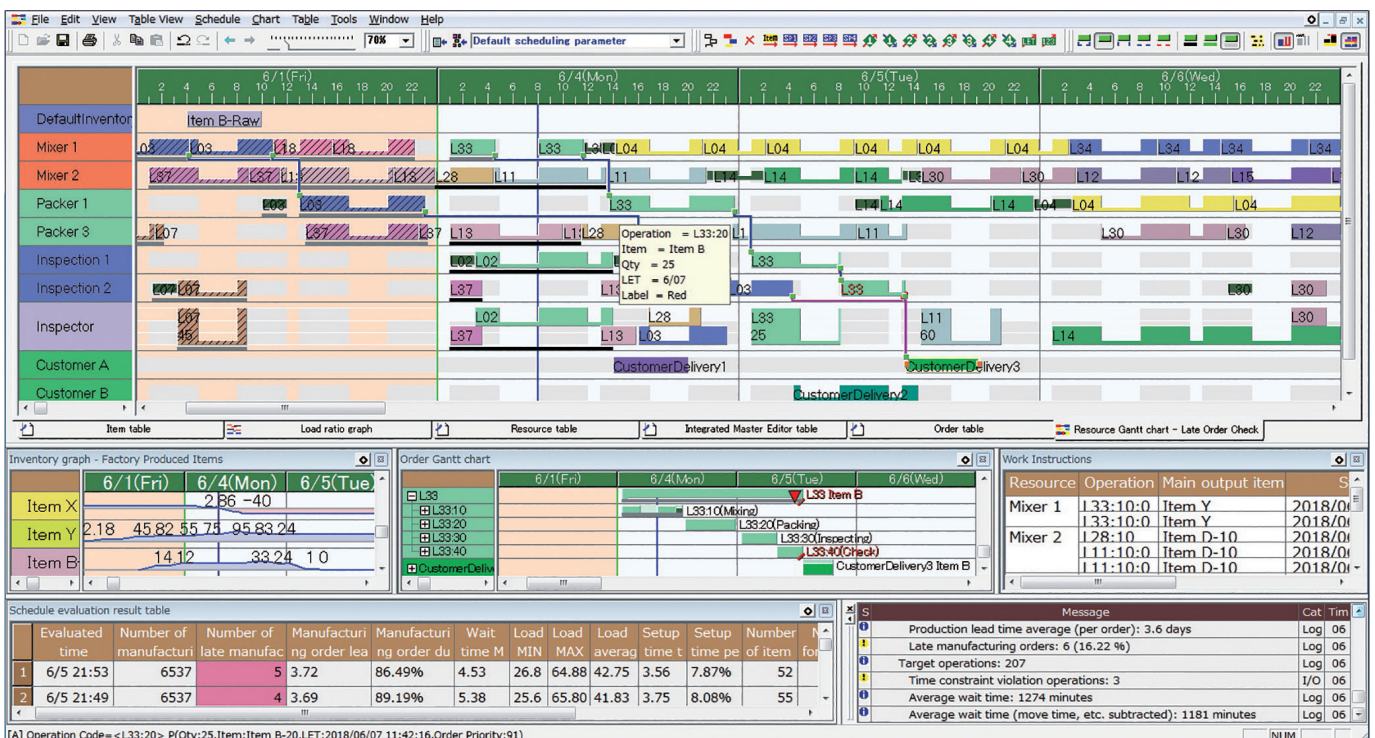
- Implementing a production scheduler seems difficult
- Our company wants the essential features only
- Need for cost effective scheduling solution
- Want to setup a scheduling system in a short time and affordably
- Want to continue using the already registered master data
- Need for a system with MRP features



The Merits of Asprova MS Light

- Production scheduling system with the minimum amount of master data
- 3-month installation schedule
- Additional features through options
- Easy connectivity with external systems and a programming interface (API)
- Multilingual support

< Asprova MS Light View >





Basic features

Asprova MS Light enables resource load leveling and backward/forward (composite) scheduling. Visual management and possibility to connect to external databases are provided as standard features as well. By adding features through separately purchased options, the functionality of the light edition can be extended up to that of Asprova MS.

Minimize late orders and perform infinite capacity scheduling filtering orders and processes while taking resource priorities and load leveling into account.

Options

- ◎ **Auto-replenishment of orders** To prevent the inventory to fall below the safety stock, create replenishment orders automatically specifying lot sizes and performing time period grouping.
- ◎ **Command editor** Edit the contents of the commands executed during rescheduling. By combining various scheduling parameters, organize and schedule operations at high-speed.
- ◎ **Sub resources** Perform scheduling using workers and jigs.
- ◎ **Branching processes** Assign processes that branch.
- ◎ **Operation split** Specify split number, split ratio, and lot sizes to split operations.

Operating Environment

OS : Microsoft Windows Server 2019 / 2016 / 2012 R2 / 2012 / 10 / 8.1 / 8

CPU : CPU Above Pentium 4 is required. (32bit/64bit)

Memory : Above 1GB. (depends on the quantity of data)

Hard disk : Above 300MB

DATE I/O : CSV File , OLE DB

Multiple Languages	Japanese	English	Korean
Chinese (simplified)	Chinese (traditional)	Thailand	Indonesian
Vietnamese	German	Polish	Hungarian
French	Spanish	Turkish	Portuguese

Developer

Asprova Corporation

KDX Gotanda Building 3F, 7-9-2 Nishigotanda
Shinagawa-ku, Tokyo 131-0041 Japan

TEL: +81 3 6303 9933

Homepage: <https://www.asprova.com/en/>

Reseller